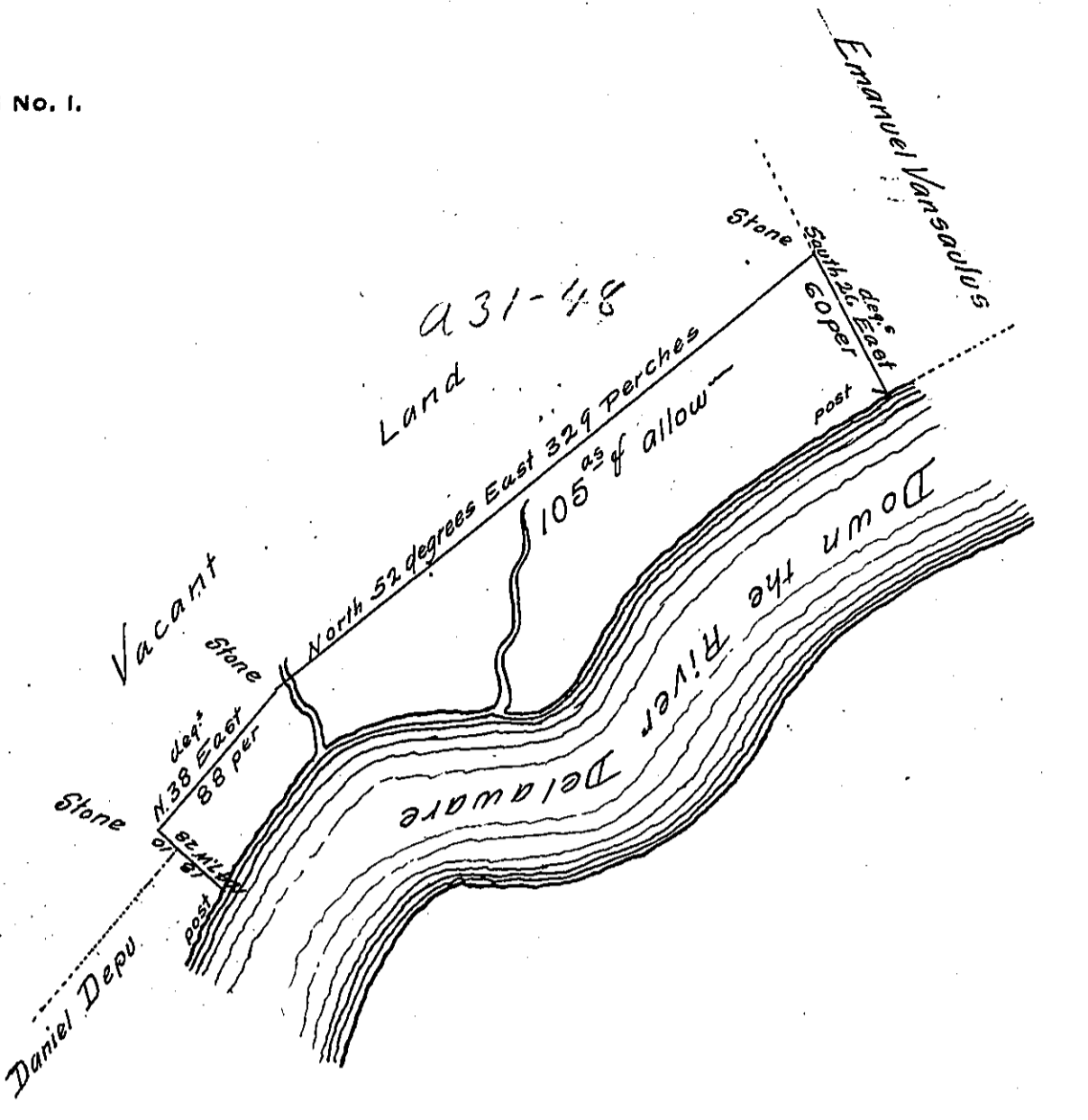


FORM NO. 1.



A Draught of a Tract of Land situate in Lower Smithfield Town-  
 ship in the County of Northampton containing One hundred <sup>of five</sup> acres  
 of allowance - Surveyed the 15<sup>th</sup> day of October 1755 unto Paul  
 Overfield in pursuance of the direction of the Honorable Proprie-  
 tarieo - Taken from the field Works of Edward Scull deced  
 Wm Scull

IN TESTIMONY that the above is a copy of the original remaining on file in  
 the Department of Internal Affairs of Pennsylvania, made  
 conformably to an Act of Assembly approved the 16th day of  
 February, 1833, I have hereunto set my Hand and caused  
 the Seal of said Department to be affixed at Harrisburg,  
 this fourth day of April 1906

*Loac P. Brown*  
 Secretary of Internal Affairs.